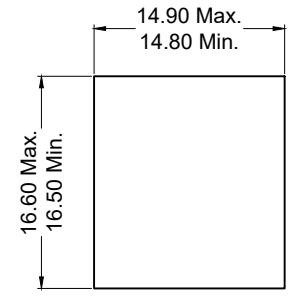
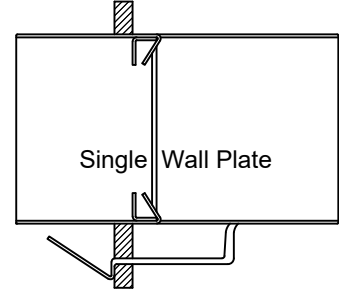
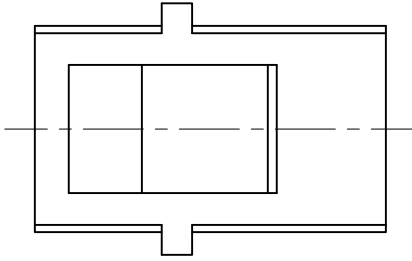
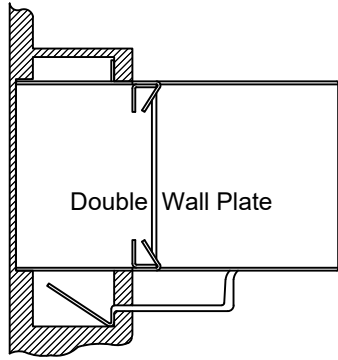


Materials and Finish

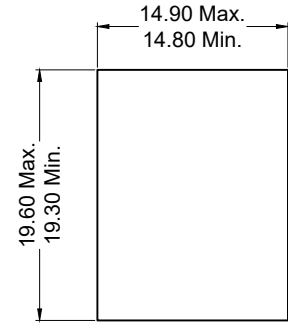
Housing Material:
 PBT Thermoplastic
 UL 94V-0 Rated
 Color: Black

Contact Material:
 Phosphor Bronze
 30u" Gold Plated

Shield Material:
 Stainless Steel



Front Panel Jack Only Clearance
 W/O Latch Feature



Single Panel-Latch Clearance
 Panel Thickness 0.062 inch

RoHS COMPLIANT
 EU Directive 2002/95/EC

Tolerances
X.X ± 0.35
X.XX ± 0.25
Unless Stated
Otherwise

REV.	DATE	DESCRIPTION	REV. BY	CHK. BY	DRAWN BY	DATE
A0	12/09/08	New Drawing	S. Vien	H. MA	S. Vien	12/04/08
A1	09/08/11	Update Design	S. Vien	H. MA		
A2	06/27/13	Update Dimension	W. Cook	P. DalCanto		UNITS
A3	11/06/13	ECO #13-084	W. Cook	H. MA		
A4	08/16/18	Update Address	D. Shehan	N/A		
A5	12/14/2020	Release DC 13-036	D. Shehan	N/A		

KLAPX-CPLR-S-88-C5E

Panel Mount Cat5e, Black, RoHS Compliant
 RJ45 Coupler, Shielded, 30u" Gold

