



DC POWER CONNECTORS: KPJX-PM Series

Snap and Lock Panel Mount

Product Features

Laptop Computers, Power Supplies and Other Portable Digital Equipment Applications
 Snap & Lock Feature Helps to Prevent Accidental Disconnects
 3 or 4 Pins Transmit Power, or One Pin Can Be Used For Signal Transmission
 For Signal and DC Power Applications
 CSA/NRTL Certified File No. LR78160
 UL File No. E140125

Performance Specifications

Materials and Finish

Shield: Copper Alloy, Tin Plated
Body: PBT Thermoplastic, UL94 V-0 Rated
Power Pins: Brass, Tin Plated
Signal Pins: Phosphor Bronze, Tin Plated

Electrical Characteristics

Contact Rating

3 Position: Pin 1 and 2, 48V DC at 7.5A Max., Pin 3, 48V DC 1.0A Max.
4 Position: 48V DC 7.5A Max. For All Pins
Insulation Resistance: 50 Megohms Min. at 250V DC
Dielectric Withstanding Voltage: 500V AC For 1 Minute
Contact Resistance: 30 milliohms Max.

Mechanical Characteristics

Durability: 1000 Cycles
Suggested Wire Awg.: #18 For Power Wires, #24 for Signal Wire

2D Drawing	IGES	STEP	3D PDF
Check Stock	Solder Profile	Request a Sample	Send Us An Email
RoHS Compliant	REACH Compliant	UL Plastic	Certificate of Compliance

Generated Part Number



Part Number Builder

<input type="text"/>	-	<input type="text"/>	<input type="text"/>	<input type="text"/>
Series		No. of Contacts	Contact Type	Shield Option

Series

KPJX-PM - Receptable, Panel Mount

Number of Contacts

3 Pin
 4 Pin

Contact Type

S - Socket

Shield Option

Blank - Non-Shielded
 S - Shielded

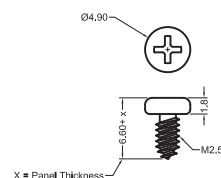
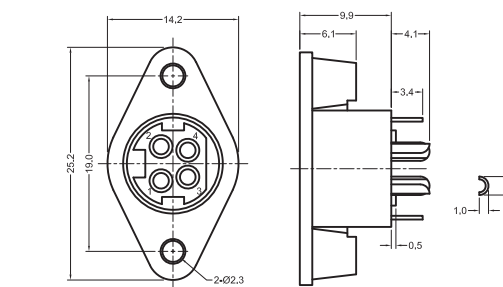
Recommended to be used with Kycon **KPPX Series Plugs**

Contact Kycon for Other Options

KPJX-PM Series

Dimensions in mm

KPJX-PM-4S



Recommended Mounting Screw