

**HDMI<sup>(TM)</sup>: KDMIX-SL1 Series**  
 SLIM UPRIGHT Type A Through Hole  
 Shield No Flange With Spring HDMI<sup>(TM)</sup>

**Product Features**

Metal Shields Provide Better ESD Protection  
 19 Position Receptacle  
 Saves Board Space

**Performance Specifications**

**Materials and Finish**

**Housing Material**  
 High Temperature Thermoplastic, UL94V-0 Rated,  
 Color Black

**Contacts**

Brass

**Plating**

15µ" Gold Plated over Nickel in Contact Area,  
 Tin Plated in Solder Area.

**Electrical Characteristics**

**Rated Current**

0.5A

**Insulation Resistance**

More than 100 Megohms at 500V DC

**Dielectric Withstanding**

500V for 1 Minute

**Mechanical Characteristics**

**Durability**

10000 Mating Cycles Min.

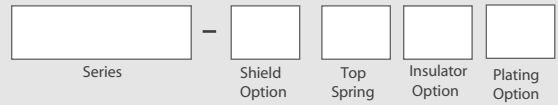
**Operating Temperature**

-40°C to +105°C

|                       |                     |                      |                  |
|-----------------------|---------------------|----------------------|------------------|
| 2D Drawing            | IGES                | STEP                 | 3D PDF           |
| Solder Profile        | CofC RoHS Compliant | CofC REACH Compliant | UL Plastic File  |
| Certificate of Origin | Check Stock         | Request a Sample     | Send Us An Email |

Generated Part Number

Part Number Builder



**Series**

KDMIX-SL1 - HDMI<sup>(TM)</sup> Slim

**Shield Option**

NS - Through Hole Shield Tabs

**Top Spring**

WS - With Top Spring

**Insulator Option**

B - Black

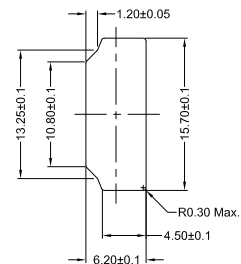
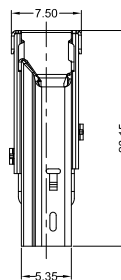
**Plating Option**

15 - 15µ" Gold

Contact Kycon for Other Options

**KDMIX-SL1**

Dimensions in mm



Reference Panel Cut Out Dimension

