



## DC POWER CONNECTORS: KLDPX Series

Panel Mount DC Power Jack

### Product Features

- 2.0mm and 2.5mm
- Panel Mount
- Solder Eyelets
- Built in DC On/Off Switch
- Portable Electronic Devices
- UL File No. E140125

### Performance Specifications

#### Materials and Finish

- Center Pin & Threaded Barrel:** Brass, Nickel Plated
- Contact #1, #3:** Brass, Silver Plated
- Contact #2:** Phosphor Bronze, Silver Plated
- Washer:** SPCC, Nickel Plated

### Electrical Characteristics

- Rated Current:** 5A
- Rated Voltage:** 24V DC
- Contact Resistance:** 30 milliohms Max.
- Insulation Resistance:** 50 Megohms Min. at 100 or 200V DC for 1 Minute
- Dielectric Withstanding Voltage:** 250V AC Min. for 1 Minute

### Mechanical Characteristics

- Durability Test:** 5000 Cycles
- Insertion Force:** 3.0kg Max.
- Extraction Force:** 0.3kg Min.

|                       |                     |                      |                  |
|-----------------------|---------------------|----------------------|------------------|
| 2D Drawing            | IGES                | STEP                 | 3D PDF           |
| Solder Profile        | CofC RoHS Compliant | CofC REACH Compliant | UL Plastic File  |
| Certificate of Origin | Check Stock         | Request a Sample     | Send Us An Email |

Generated Part Number

Part Number Builder



#### Series

KLDPX-0302 - Panel Mount DC Power Jack

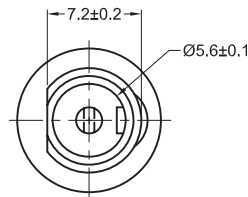
#### Diameter

- A - 2.0mm Center Pin Diameter
- B - 2.5mm Center Pin Diameter

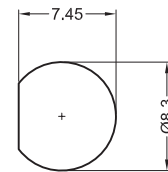
Contact Kycon For Other Options

### KLDPX Series

Dimensions in mm



(NOTE: NUT AND WASHER NOT SHOWN THIS VIEW)



Recommended Panel Cutout

